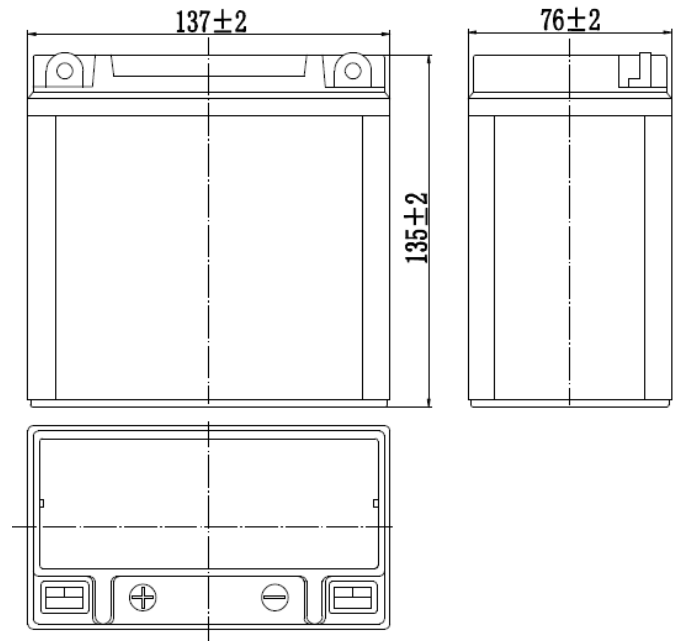


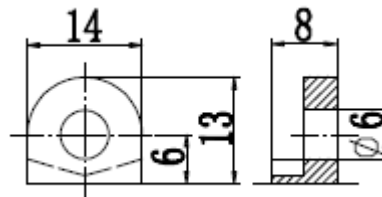
Specifications

Nominal Voltage		12 V
Capacity(10HR, 25°C)		9Ah
Dimension	Length	137 ± 2mm (5.39inch)
	Width	76 ± 2mm (2.99inch)
	Height	135 ± 2mm (5.31inch)
Approx. Weight		2.9kg (6.39lbs) ± 5%
Operating temperature range		-20°C ~ 50°C (-4°F ~ 122°F)
Standard Charging method (25°C)	Current	0.9A
	Time	5~10h
Quickly Charging method (25°C)	Current	4.5A
	Time	1h
Terminal material		Lead
Container Material		ABS

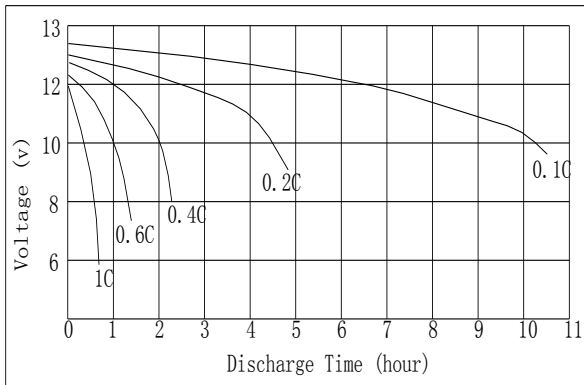
Dimensions



Terminal



Discharge Characteristics(25°C)



Self-discharge characteristics

